

# FOCUS!

WWW.FOCUSGROUPCC.COM/

"Your photography is a record of your living" - Paul Strand

**Serious photographers sharing their knowledge and experiences**

## Updates from the president

June Meeting: Ralph is taking the contest winners to O'Charley's at 6291 W. Broad 23230. Members should arrive between 5:30 - 5:45 so we will be able to get to the meeting on time.

June Meeting Program: After voting for the slate of officers and presenting the winners of our first photo contest, we will have our annual Critique. David Everette has graciously accepted the job this year. Every member is expected to submit an image. It can be your favorite one, your best one, or one that didn't work and you want to know why.

Sid Koerin will be taking new member photos for the member gallery of our website before and after the June meeting.

*"While there is perhaps a province in which the photograph can tell us nothing more than what we see with our own eyes, there is another in which it proves to us how little our eyes permit us to see." - Dorothea Lange*

## Your Club's Committees

Your newly elected officers need your help. We share the workload by having committees and every member is expected to be an active member of at least one committee.

Let Cyane (clowden@FastMail.fm) know what you are interested in doing, first come first served. Otherwise you will likely be appointed to a committee.

Committees:

- **Exhibition**
- **Fieldtrip & Special Events**
- **Membership**
- **Newsletter**
- **Program**
- **Social**
- **Website**

Remember: Coming together is a beginning; keeping together is progress; working together is success. Henry Ford

## Member News

**Frank Feigert** will open his show, "Sightings," at the University of Virginia Hospital on Friday, June 28, 3:30 - 5:30. The show will run until August 30, and consists of some 2 dozen images.

**Bob Coles'** article "Kodak's 35mm Metal Film Canisters (1936-1974)" was published in the May 2013 issue of the Viewfinder Magazine the official publication of the International Leica Society.

## Contents

**An Unusual Way to Display B&W Prints.....3**

**FGCC meeting .....5**

**Going in the Field during the Summer Months 5**

**Scenes from the Presquile Trip.....6**

**FGCC Club Calendar 2013. 7**

**Aspect Ratios and the Art of Cropping.....8**

## Photo of the month

### There was a tie

While at Maymont Park in April I was photographing the Tulips, and among them were all colors of Pansy's. I got low, laying down on the sidewalk and just tried to get a nice clean and colorful composition. I did enhance the vibrance just a bit and increased the saturation to help bring out the colors. It may be a little exaggerated but I love the bright colors. I did decrease the clarity to give the natural imperfections of the Pansy a soft touch.

*By Debbie Roberts*



**What fun!**

**A pocket camera can add the "joy of seeing" to the task of taking out the trash!**

*By Bill Billings*

---

## June 11 FGCC Program

*By Cindy Krumbein*

Ralph Sell and his committee have chosen first, second, and third-place winners of the First Annual FGCC Photographic Contest. The 3 winners will be present at the June 11 meeting for recognition and presentation of their awards. Each will show and briefly discuss their winning image and their photographic vision. By encouraging the winners and supporting them with your enthusiasm, we are building the quality of future FGCC Annual Photographic Contests, as well as the enjoyment and development of serious photography in our community. Special thanks to Chairman Ralph Sell and his committee, Cyane Lowden, Frank Feigert, Larry Runyon, & Debbie Roberts, for their efforts on behalf of FGCC.

Our very own David Everette has graciously agreed to serve as the "Official Critic" of the FGCC End-of-the-Year submissions. David is an acclaimed photographer and a generous mentor to many of our members.

For the June 11 program, each member may submit up to THREE images for David's professional consideration, to be shared with the group for the edification of all. Images should be labeled with the member's name followed by 1, 2, or 3 in the order you wish them to be considered. During the critique, all #1 images will be examined first, then #2 images, and #3 images if time allows. Submit your 3 best images of this year to the FGCC Roundtable address, then have a discussion with David of the photographic strengths of your images and things to consider next time you're on a shoot.

## An Unusual Way to Display B&W Prints

by Al Warfield

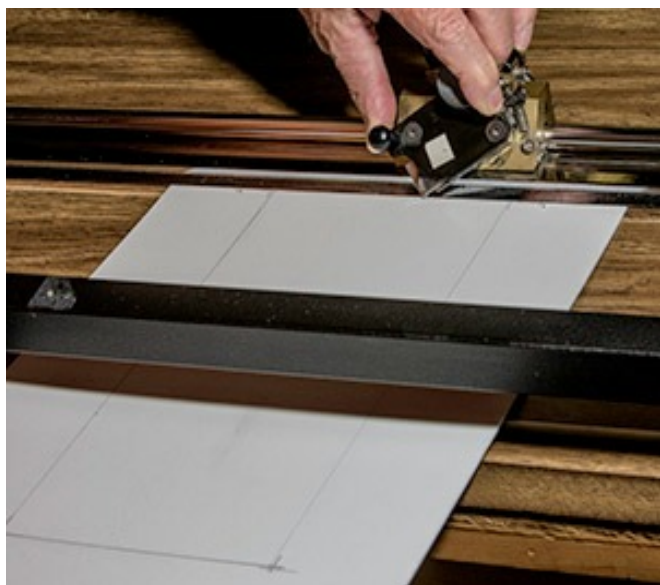
Recently I needed to make a print for the Curles Neck Photo Project and ran into a problem getting it to look the way I wanted it to appear. The photograph was taken by Linda. It was a black and white with a sepia tint, and had a texture applied. The owner of Curles Neck Farm likes colored mats instead of the usual white ones, and he also likes double mats where the bottom mat is an accent color that brings out a color in the print. So I tried to design the mat system to fit those characteristics. The image is shown in Figure 1.



At first I thought I would add a thin stroke (narrow line) to the outer edge of the print the same color as the tree, and include a border of about 1/4" that consisted of the paper I printed the image on - a textured natural fine art paper - Epson Cold Press Natural White Fine Art Paper. I also decided that the top mat would be Crescent 1651 (light brown with speckles and texture) with a Crescent 1561 bottom mat (sepia) of which 1/4" was revealed. I simulated that in the computer, but the white paper border seemed to be too distracting. So I decided to add a much wider stroke on the outside of the image. To do that it is

necessary to first add about 1/4" of canvas to the image so that the outside stroke has somewhere to go, and then go to the blend mode dialog and choose an outside stroke of about 50 pixels. This gives a nice wide stroke. I changed the color with the color picker to the same shade as the dark tree trunk. It left white space at each corner of the stroke line, but I found that I could make the foreground color the same shade and then paint the color in the corners with the brush tool. That produced the desired result - a wide border the same color as the tree trunk. The image with the wide stroke is shown in Figure 2.

The next problem was how to eliminate the white line created by cutting the bottom mat. In similar situations I have resorted to a reverse bevel bottom mat, so I decided to try that for this image. A reverse bevel eliminates the white line from the core of the matboard, and also gives the print a somewhat 3-D look.



But they can be difficult to cut. Either you have to cut them with the matboard color face up - which requires pencil lines to be made on the colored surface and then erased - or place the colored face down, but then you have to cut the mat upside down as shown in the photo shown in Figure 3. I decided this method would be best. Note that the fence is not used, because the cut is being made at the top instead of the bottom of the matboard. To make that work it is necessary to draw lines on the back of the matboard at a position 1/16" closer to the edge than the intended mat width. The lines are shown in the photo, drawn with a sharp pencil. It is necessary to line up the blade tip with the pencil line since there is no fence to guide the cut. The back of the matboard

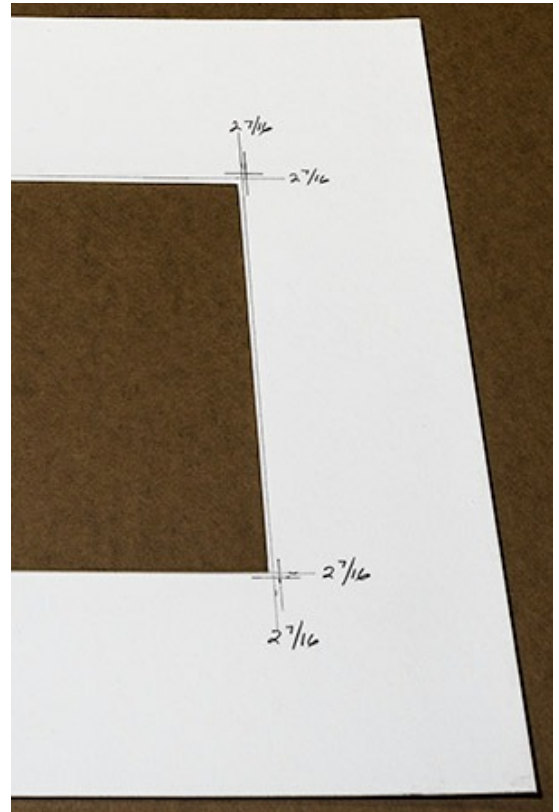
is shown after cutting the mat in Figure 4. Notice the pencil lines and the 1/16" bevel seen from the back.

Also, it is important to make the mat cutout line up slightly inside the outer edge of the stroke to give a good 3-D look. So extreme care has to be taken to design the mat system to take care of all these variables. But it's worth all that effort to achieve the right result. That is shown in Figure 4, which is a photograph of the final print with mats. Notice that the flash used to light the finished product threw a shadow onto the dark stroke. That is what gives it the 3-D look. And there is no white line between the bottom mat and the image.

In my blog on our website <http://www.allindaphoto.com/>, I will have an article soon that shows this process in more detail. And if you want to see the final result, we will be having a chance for the club to see all the images hanging at Curles Neck Farm soon. The 3-D effect is much easier to see on the actual print than on a computer screen.

In Figure 5, which is a photograph of the final print with mats. Notice that the flash used to light the finished product threw a shadow onto the dark stroke. That is what gives it the 3-D look. And there is no white line between the bottom mat and the image.

In my blog on our website <http://www.allindaphoto.com/>, I will have an article soon that shows this process in more detail. And if you want to see the final result, we will be having a chance for the club to see all the images hanging at Curles Neck Farm soon. The 3-D effect is much easier to see on the actual print than on a computer screen.



## **FGCC meeting**

**May 14, 2013**

Ralph announced that the winners for the first annual photo contest were chosen, even though there were not a lot to choose from.

The slate of officers for next year are:

Cyane Lowden, president

Cindy Krumbein, vice president

Stephen Rethford, Secretary

Gilpin Brown, treasurer

There were 7 members showing photos for roundtable.

BL Kocen from Glave-Kocen Gallery and Cindy from Page Bond Gallery were the speakers, moderated by Cindy Krumbein. They gave a lively discussion on how to hang a show.

### ***Going in the Field during the Summer Months***

*by Ron Ratcliffe*

Many of us enjoy the wooded areas and open fields during the summer. Sitting on the ground to get a better shot or climbing the tree to change the perspective or maybe just picking blueberries. One of the major problems in outdoor activity some of us live with, is that we react unfavorably to insect bites and stings. Insect stings can be fatal as Del Whitehurst found out jogging one morning on Virginia Beach after stepping on a bee's nest. I personally have been totally knocked off my feet for over a week with outpatient care by a tiny spider that stung my ankle after walking through some high grass. Here are a few hints that you could find valuable in your summer travels:

The best tick and spider preparation for clothing when you have time to prepare is Permethrin. Permethrin is a synthetic pyrethroid insecticide rather than a true

repellent. Used only on outside of clothing and should not be allowed to touch the skin. Spray your clothes the night before and let dry and it will last up to two weeks. Deet based products are primarily used for mosquitoes Permethrin is used by the US military and most people who work in the woods. Can be purchased at Dick's sporting goods and mail ordered. Be sure to purchase Permethrin that is water based and to be used on clothing not the variation intended for plants. Amazon carries the **Repel Permethrin** product and **Sawyer Permethrin** clothing spray.

You can not drown a tick. They can survive a cycle through the washer. The tick should be handled and disposed of properly. Remove ticks properly. Don't use alcohol, other chemicals, or a hot match, or the tick may vomit germs into you. Don't squeeze the tick's gut, or germs may squirt into you. A pediatrician has come up with best method to remove a tick I have heard of. Coat a q-tip with liquid soap and cover the tick with the soap. It will release in 10-15 sec and you can remove with the q-tip. Works

well in those hidden places where ticks love to hide.

The last item is what to do when you have an insect sting or even a jelly fish sting. Tufts Medical School did a 10 year research project to find the best treatment for a sting using household products. Thousands of people are stung every year and some suffer very painful wounds. What Tufts found was that Adolf's plain meat tenderizer worked better than anything commercially available. Use the powder with water to make a paste and spread around the sting. The paste will dry and yellow drops will appear on the surface much like the sugar on top a meringue pie. One can wash the residue off in about 15 minutes and then remove the stinger and all is well with little or no pain left. I have found this works best when applied as soon as possible while the sting is still localized. I used to carry the tenderizer pre-mixed in a 35mm film can

Now go get some spectacular landscapes.

## Scenes from the Presquile Trip

*By Al Warfield*



**FGCC Club Calendar 2013**

FGCC

Month	Day	Activity	What	Contact
June	11	Club meeting	Annual Meeting, Results of Photo Contest by <b>Ralph Sell</b> and our Annual Critique The Official Critic: <b>David Everette</b> Business: Approval of 2013-14 budget and election of officers.	Charles
	21	Board Meeting	All are welcome	Linda
July		Summer Break		
	22		Deadline for Newsletter	
Aug		Summer Break		
	10	Field Trip	Lake Anna Winery	Debbie
	26		Deadline for Newsletter	
Sept	TBA	Board meeting	All are welcome	Cyan
	10	Club meeting	TBD	TBD
	30		Deadline for Newsletter	
Oct	TBA	Board meeting	All are welcome	Cyan
	3	Show	James Center (10/5 to 10/26) Show	Vicky
	8	Reception	James Center	TBD
	28		Deadline for Newsletter	
Nov	1	Show	SunTrust Gallery (11/1 to 11/30)	TBD
	TBA	Board meeting	All are welcome	
	12	Club meeting	TBD	TBD
	25		Deadline for Newsletter	
Dec	TBA	Board meeting	All are welcome	
	6	/Show	Richmond Public Library (12-6 to 12/31)	TBD
	6	Reception	Richmond Public Library	TBD
	10	Club Meeting	TBD	TBD
	30		Deadline for Newsletter	TBD

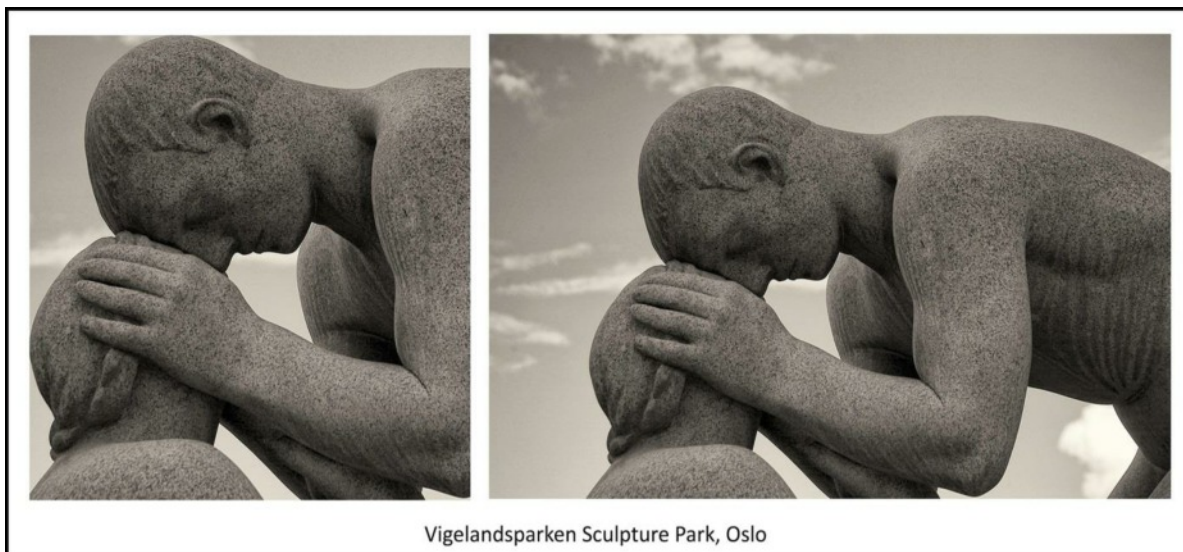
## ***Aspect Ratios and the Art of Cropping***

This essay was prompted by a post by Michael Reichmann, the owner and founder of the Luminous Landscape website. The primary theme is that cropping is an art, which can improve

visual impact by showing only those elements that directly relate to the image's story. The post stresses that photographers should not be constrained by given aspect ratios in creating their final images. The image should dictate the crop, not the aspect ratio.

Please read the article at:

<http://www.luminous-landscape.com/essays/und-crop.shtml>



The original image has a 3:2 aspect ratio (35mm film). The cropped image is 1:1. There have been surveys concluding that rectangular aspect ratios, such as 3:2, have more visual appeal than 1:1. However, should that overrule the efficiency of conveying the story?

Note the individual islands of the sky created by cropping just to the two heads. Eye tracking tests have shown that a viewer's eye will wander in the bright areas before going to the darker areas. By creating the sky islands, the eye quickly moves to and stays with the darker subject. Open your mind and give it a try.

This was emphasized at an Art Wolf workshop that Bob Coles and I attended a few years ago.

<http://www.artwolfworkshops.com/seminars.php>

I realize that the above is debatable. I present this as something to consider. It is not a set of instructions.

Chuck Spalding